



eocortex 

Eocortex 4.1

Next-level management!

AGENDA

Strategy of Eocortex product development

Novelties of 4.1 Maps and Plans

Novelties of 4.1 Custom notifications and Webhooks

Novelties of 4.1 Increasing system performance

Novelties of 4.1 More integrations

Novelties of 4.1 Mobile application and web features

Novelties of 4.1 New video analytics

Special offers from Eocortex

EOCORTEX – MORE THAN 14 YEARS ON THE INTERNATIONAL MARKET

85+

countries

21

AI-based analytic modules

~15,000

projects implemented with Eocortex

~1,000,000

cameras operating on Eocortex

Eocortex LTD:

A global developer of Video Management Software with AI-based analytics

London, UK



THERE IS NO NEED TO CONTACT OTHERS

All components of Eocortex including video analytics are created by ourselves **in a single product** with no need for customers to contact different providers video management software or analytics

We make sure all products are **easy to setup and use**



THE SITUATION IS UNDER CONTROL: NEW MAPS AND PLANS

OPTIMIZED MAPS AND PLANS



Multiple layers and floor plans

Convenient operation with a large number of cameras located side by side



Friendly navigation

The operator can promptly find the right location, building or camera



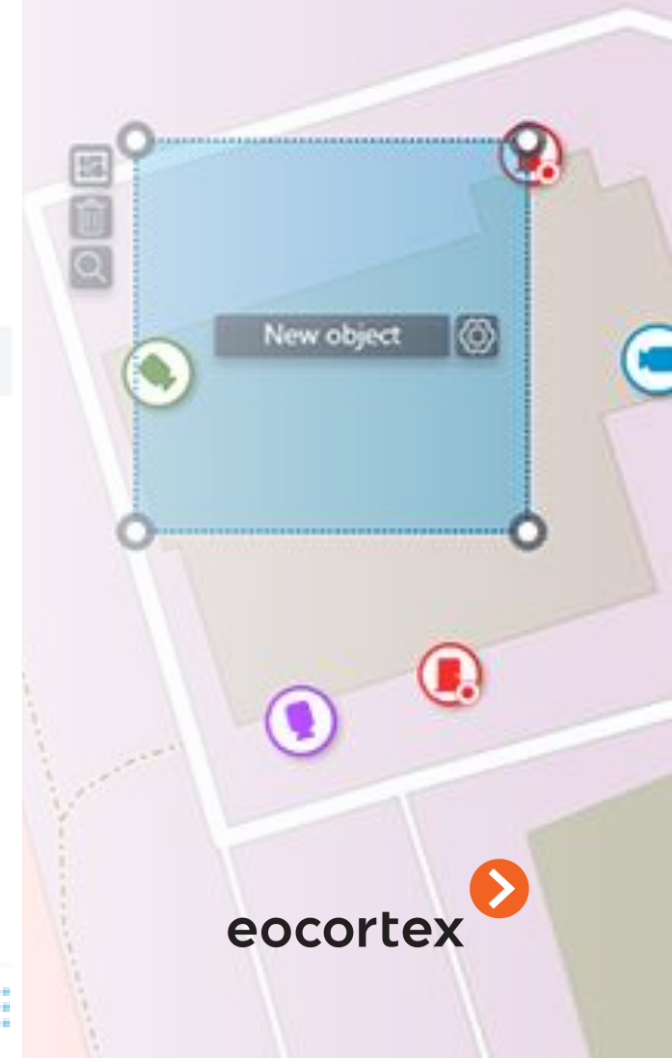
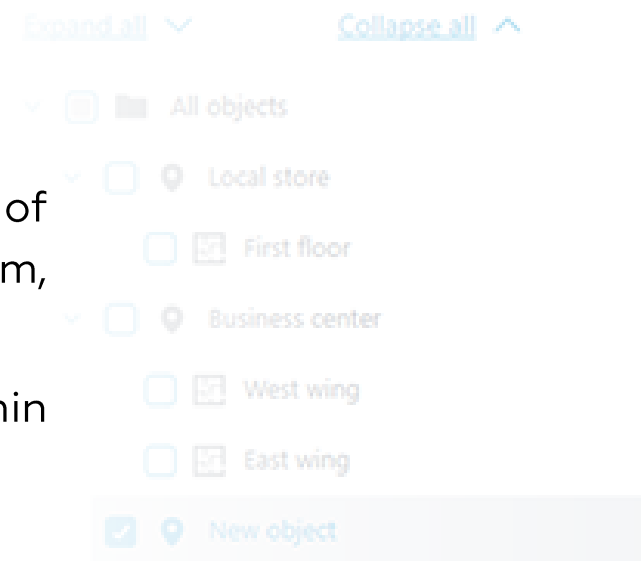
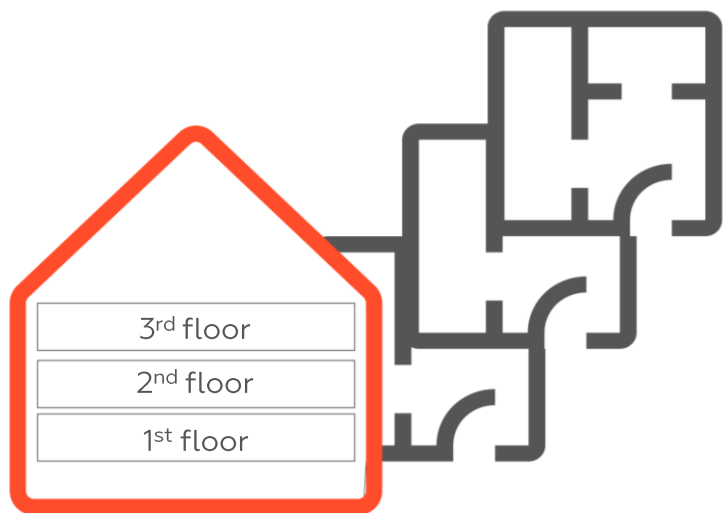
Situation under control

The operator will not miss any important event even if he follows 1000+ cameras in the system

MULTIPLE LAYERS AND FLOOR PLANS

With the new maps and plans in 4.1 you can:

- Set up a multiple layer structure consisting of different objects (supermarket, workshop, stadium, building, etc.)
- Numerous cameras can be easily positioned within one location at the map



FRIENDLY NAVIGATION

With the new maps and plans in 4.1 you can:

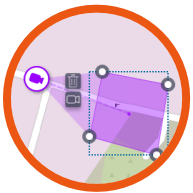
- Promptly navigate around the map or the plan and evaluate the situation (visually monitor the situation of a large system)
- Easily understand the camera direction and its blind spots



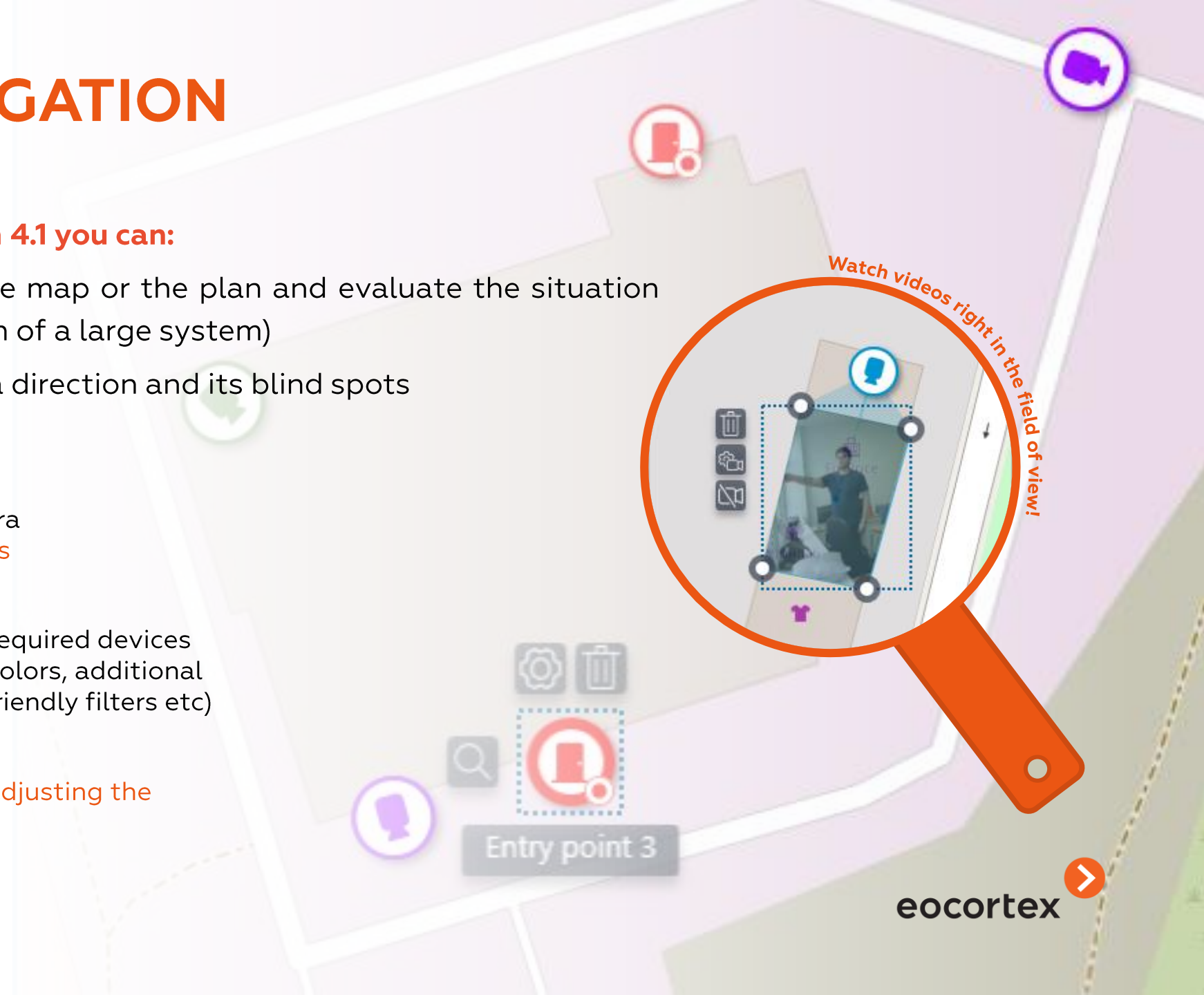
create your own camera classification with **tags**



promptly identify the required devices (with the help of icon colors, additional icons for the devices, friendly filters etc)



enjoy flexibility when **adjusting the camera angles** of view

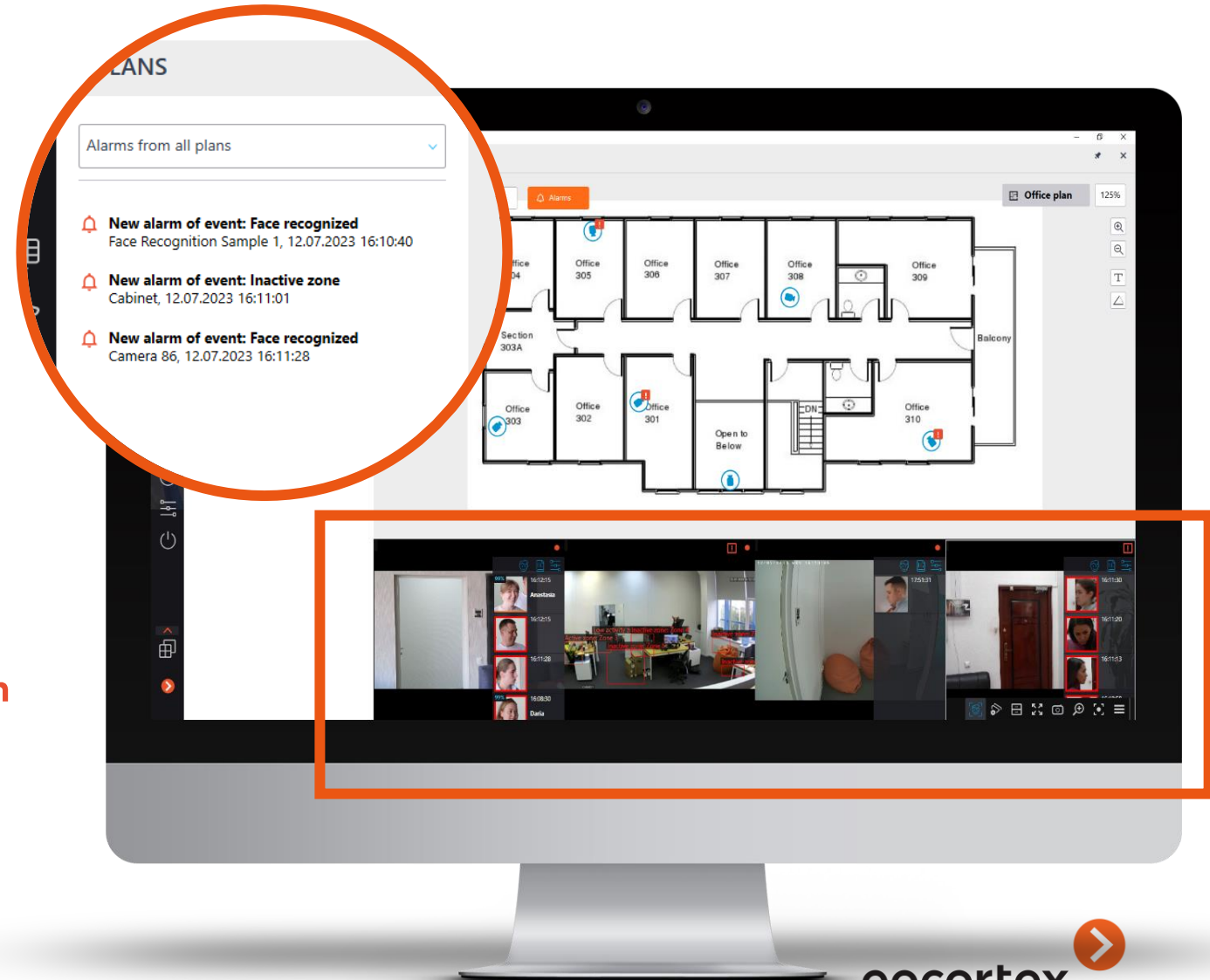


SITUATION UNDER CONTROL

With the new maps and plans in 4.1 :

- All the alarms are in alarm log! The operator will not miss any important event even if he follows 1000+ cameras in the system
- You can set up a combined display including a plan and several cameras

With one monitor you can follow the situation at the large-scale distributed object!



CUSTOM NOTIFICATIONS AND OPENNESS OF THE SYSTEM FOR YOUR TASKS

CUSTOM NOTIFICATIONS AND WEBHOOKS



Integrations even more convenient

Send information to an external system with no need to know Eocortex API



Customize the content and type of notifications

Get all the necessary information about the event

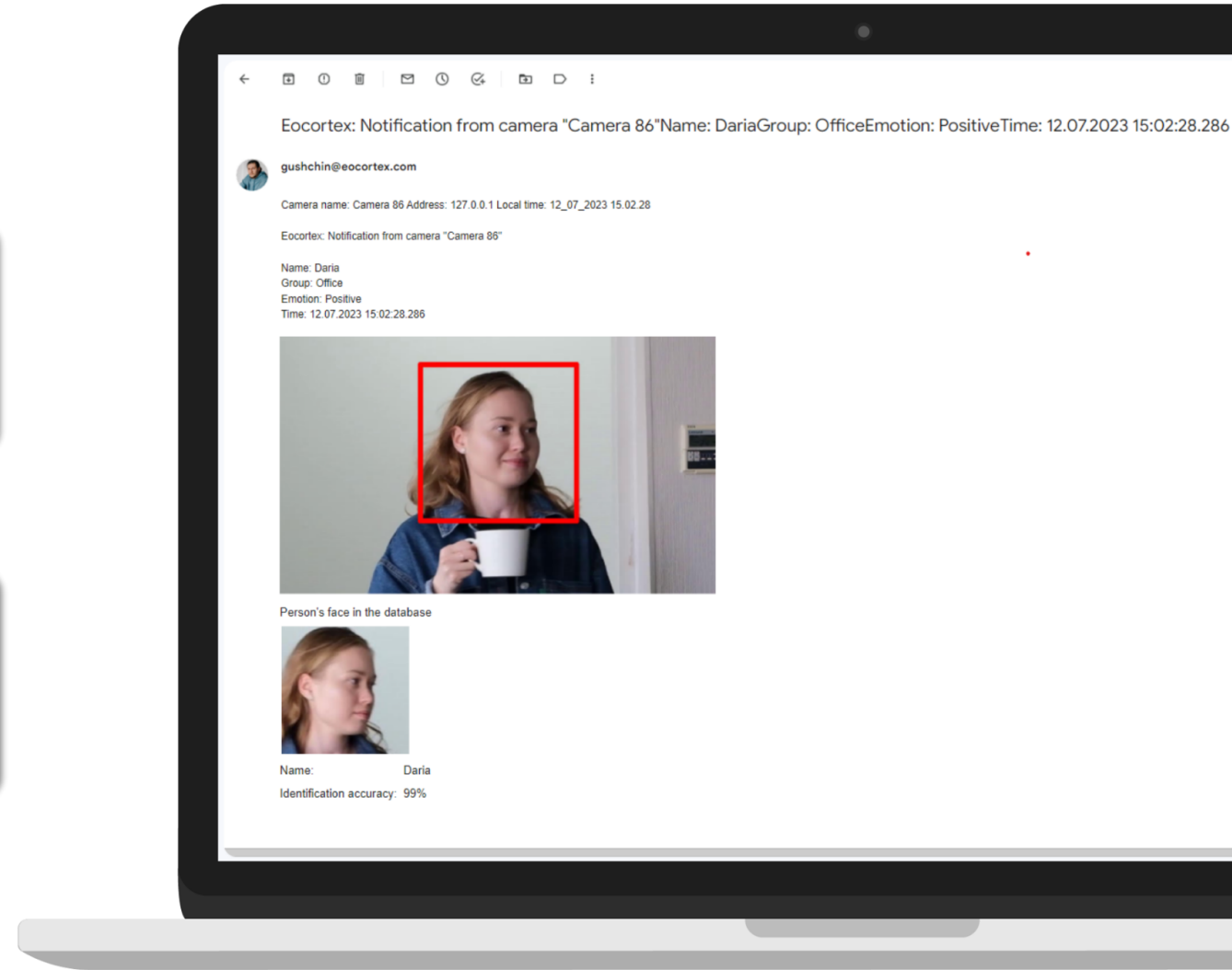
CUSTOM NOTIFICATIONS

1

Adjust subject of any alert, notification text and file/shoot name

2

See event frames and send a link to the camera where it happened

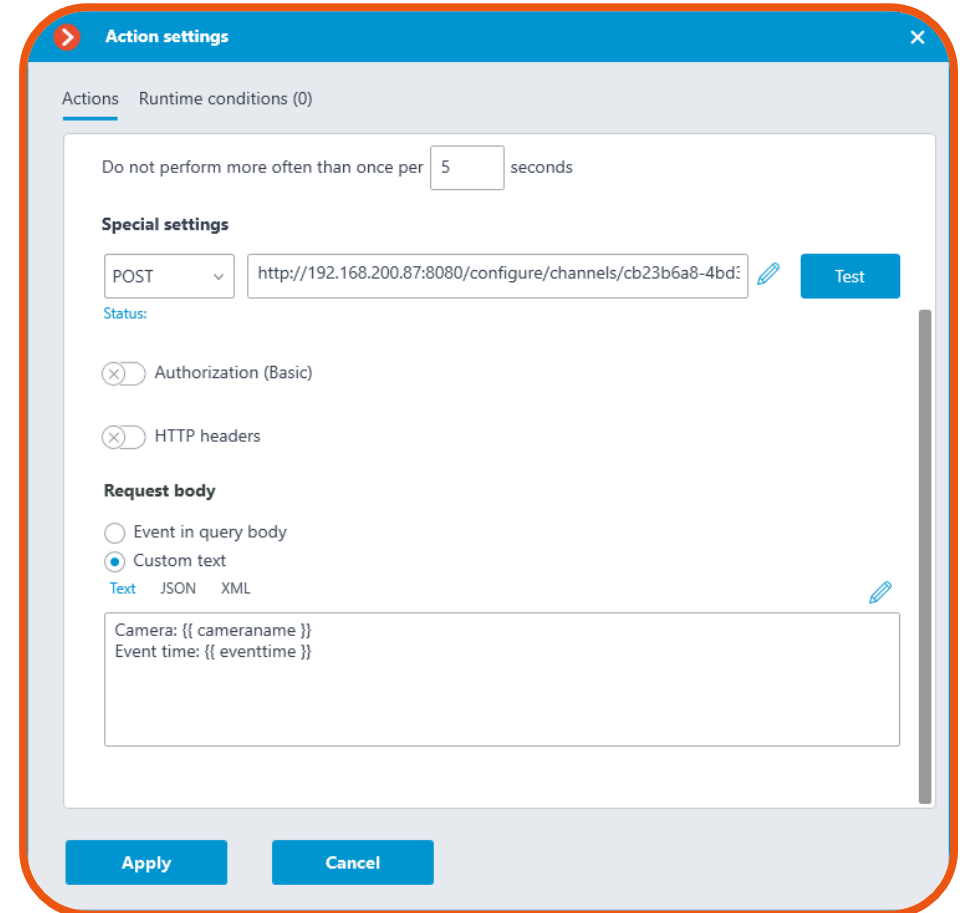


WEBHOOKS

Now Eocortex send information to external systems through HTTP API!

For example:

- Submission of name, group or identifier data of the recognized person to ACS so it could open the door
- Automated filling in of the time-sheet based on data coming from the Face Recognition module submitted to CRM



Action settings

Actions Runtime conditions (0)

Do not perform more often than once per seconds

Special settings

Status:

Authorization (Basic)

HTTP headers

Request body

Event in query body

Custom text

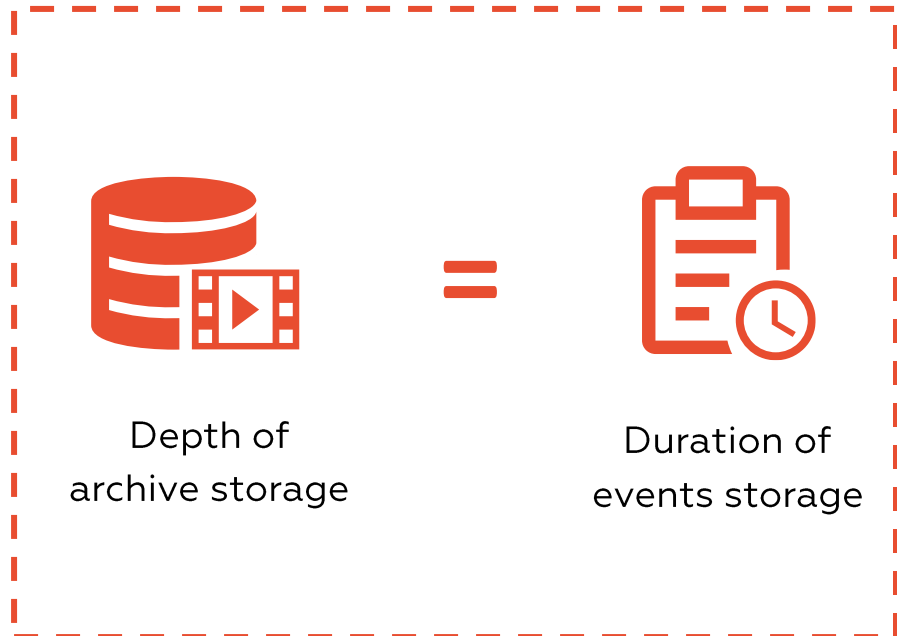
Camera: {{ cameraname }}
Event time: {{ eventtime }}



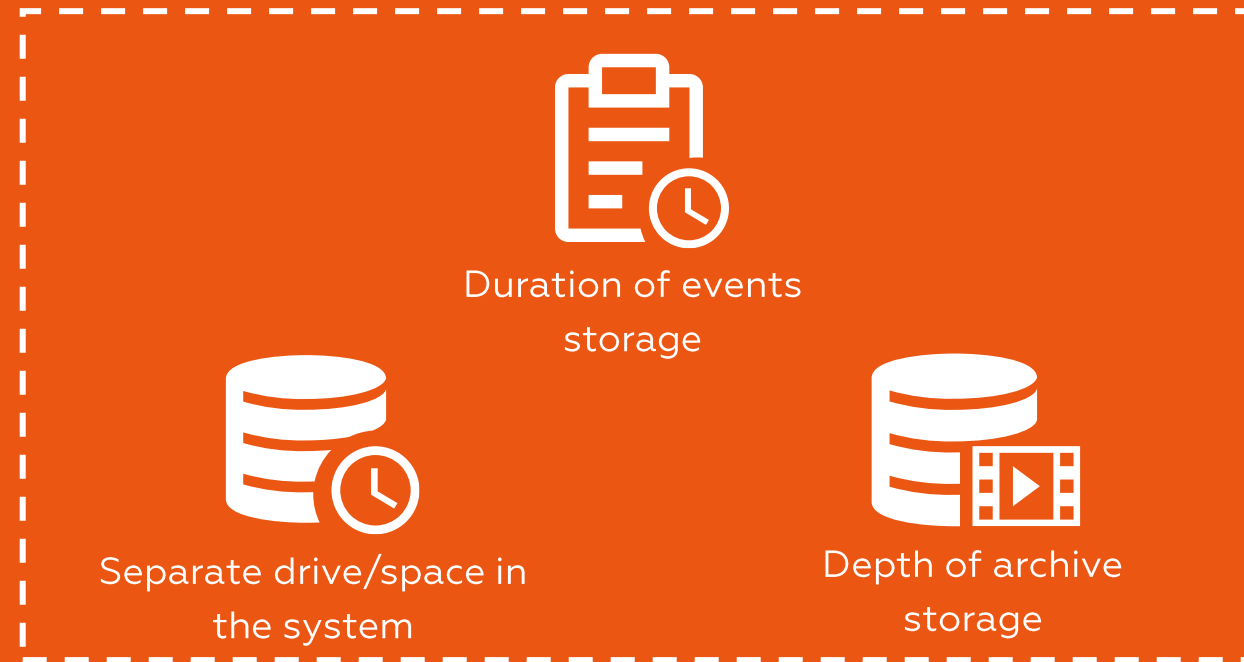
**KEEP EVENTS EVEN LONGER
AND UNLINKED TO ARCHIVE**

CUSTOMISE THE STORAGE TIME OF ANY SYSTEM EVENT

BEFORE



NOW



**MAKE THE MOST OF YOUR
GRAPHICS CARD, REDUCING
THE LOAD ON THE CPU**

DECODING ON GPU



Reduced CPU load up to 30%*

frame decoding is performed on the available resources of the video card



Run more cameras on the same server

by reducing the load on the CPU



Introduced a balancing mechanism that, depending on the load on the GPU, can shift some of the cameras to the CPU and vice versa



MORE INTEGRATED DEVICES FOR COMPREHENSIVE SECURITY

EOCORTEX INTEGRATIONS

Device actualization and new video analytics from cameras



- 01** Zone detection
- 02** Object detection
- 03** Line crossing
- 04** Detection of running
- 05** Crowd detection

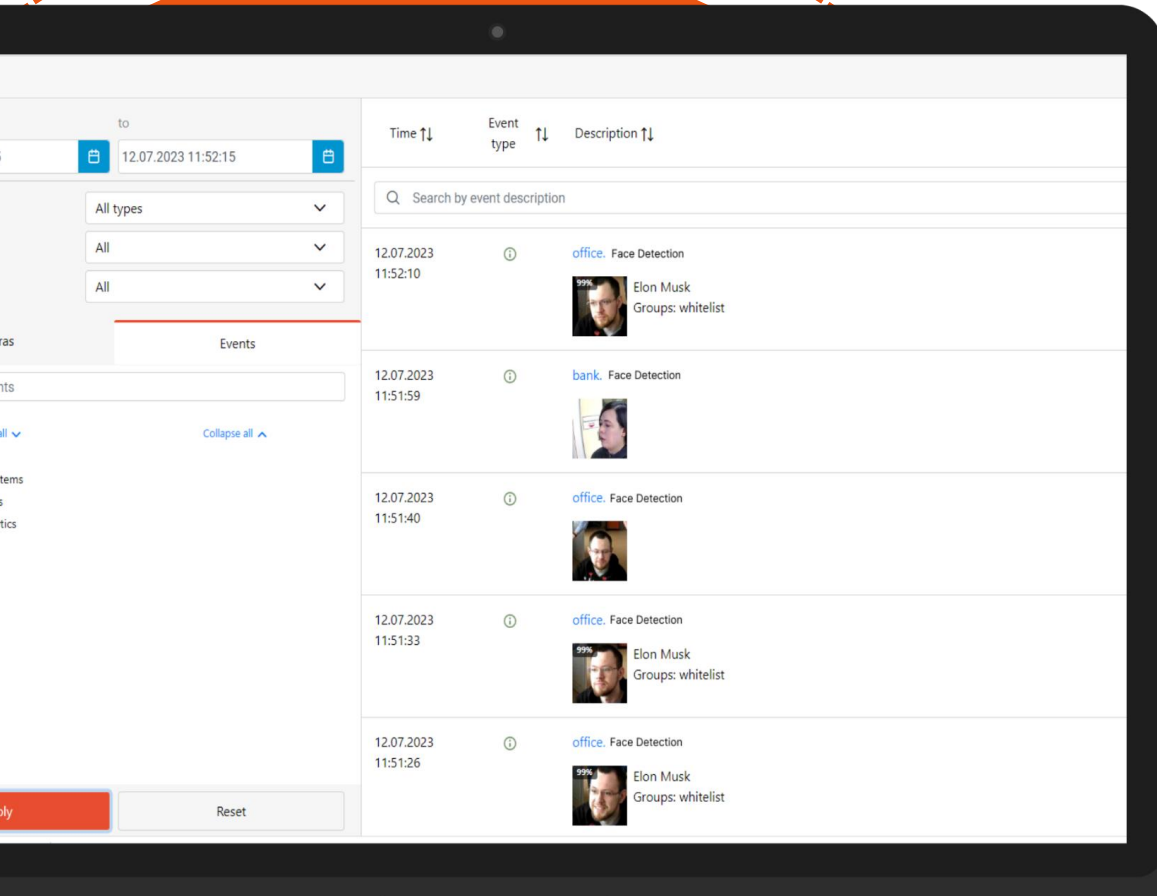


- 01** Receive and process events
- 02** Send commands to the ACS to perform various actions

An aerial photograph of a city skyline, likely New York City, with a heavy orange overlay. The text "AND WHAT'S ON THE MOBILE APP?" is centered in white, bold, sans-serif font.

**AND WHAT'S ON THE
MOBILE APP?**

EVENTS LOG IN WEB-CLIENT APPLICATION

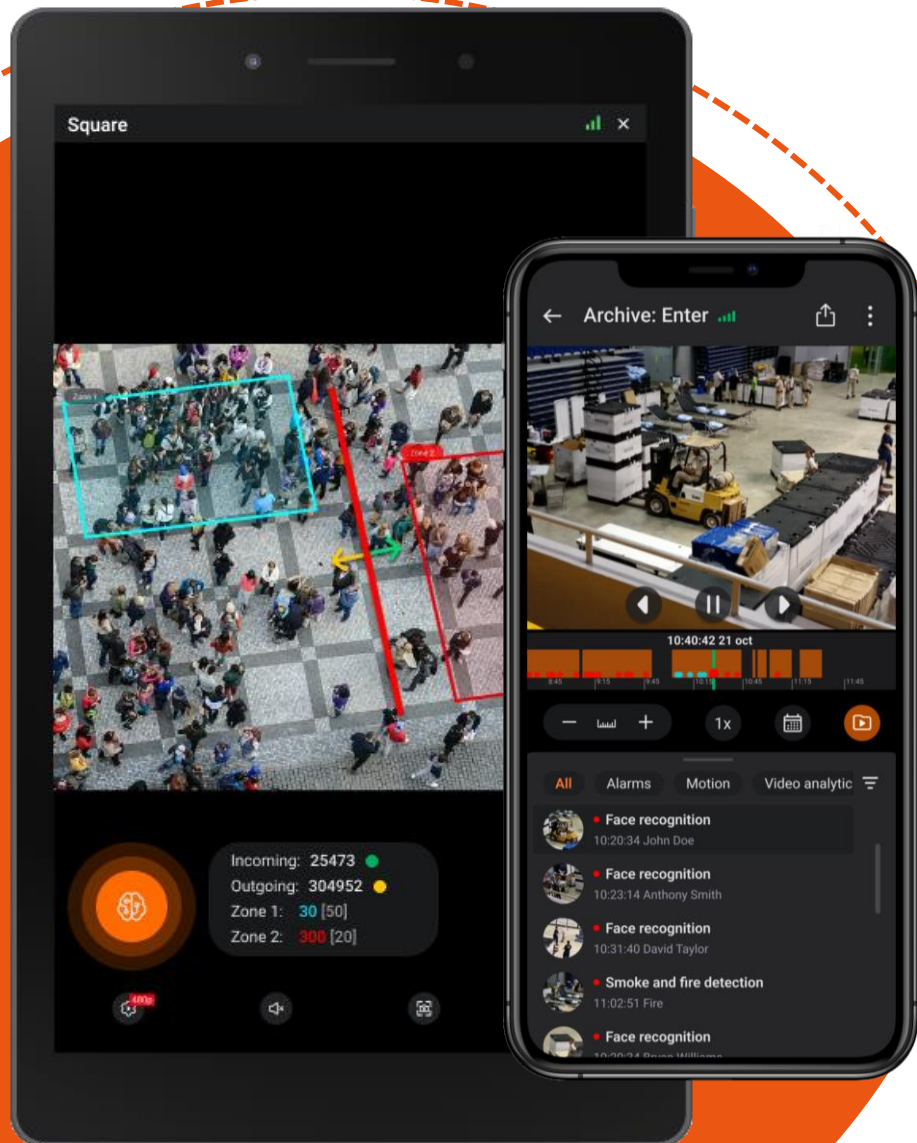


Now you can:

- Control video system events through a web client
- Search for the requested events using the text related to the event and with the help of filters

For example, the user is willing to monitor video system events and to investigate violations even when he is away from the workplace

MOBILE APP NOVELTIES



Now you can:

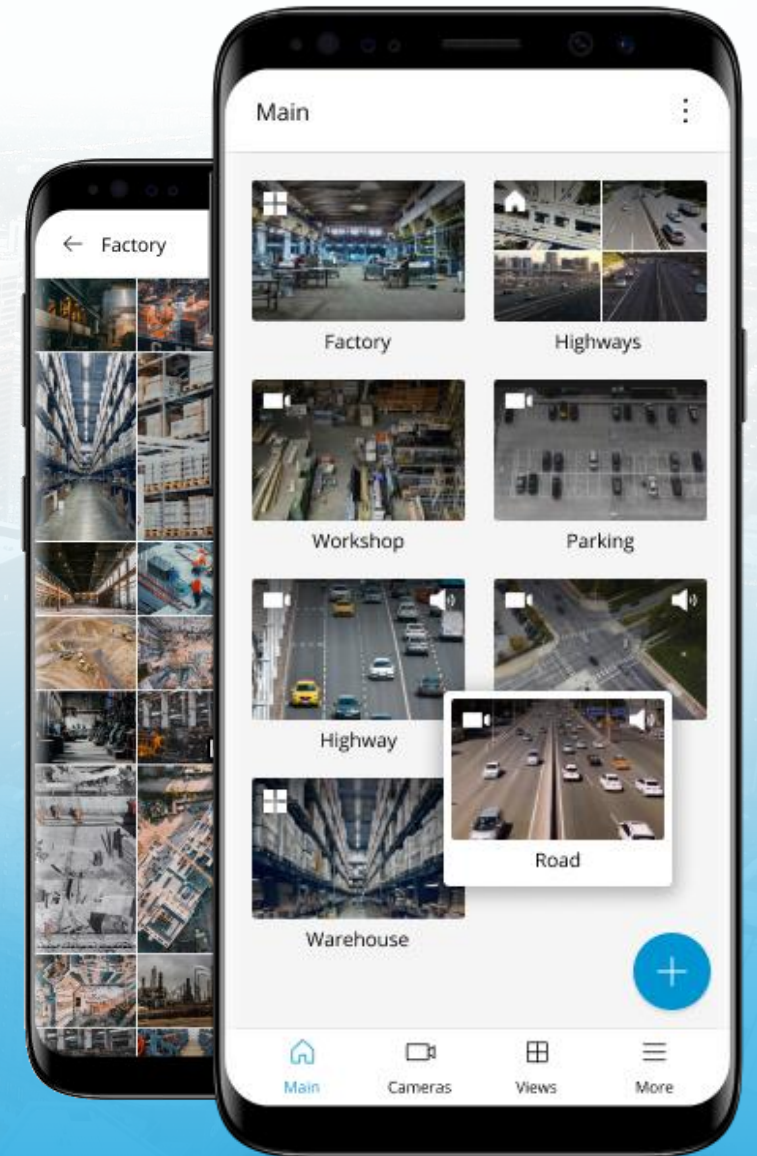
- View archive by events you want (e.g., alarms) and check what happened without having to scroll the entire archive
- View live data from Object Classification & Counting and People Counting video analytics
- Add any number of cameras to a display and scroll them conveniently

Focus on what matters!

Beta version of the new mobile application:

- improved application responsiveness
- updated view creation mechanism. Now all you have to do is select cameras and they will automatically merge into a view that can be easily modified using gestures
- improved full-screen viewing interface
- convenient display of camera trees and views as a file system

Coming soon!



A NEW INTELLIGENT MODULE TO SOLVE YOUR TASKS

EMERGENCY VEHICLES DETECTION MODULE



With the new module, you can:

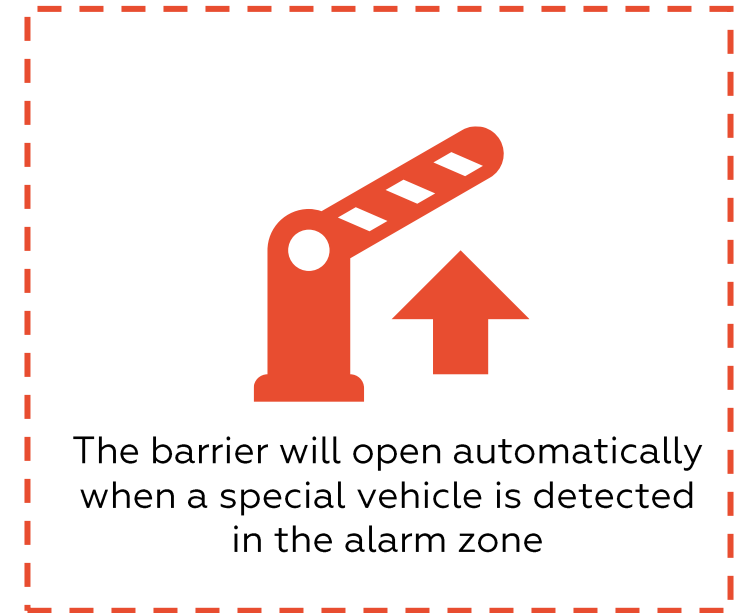
- Detect the presence of emergency vehicles in one or more areas of the frame for a specified period of time
- The following emergency vehicles can be recognized:
 - Ambulance
 - Fire engine
 - Police car

EMERGENCY VEHICLES DETECTION MODULE

- 1 Class detector accuracy **emergency vehicles / non-emergency vehicles** – up to 95%
- 2 Class detector accuracy: **ambulances, fire trucks, police cars, non-emergency vehicles** – up to 90%



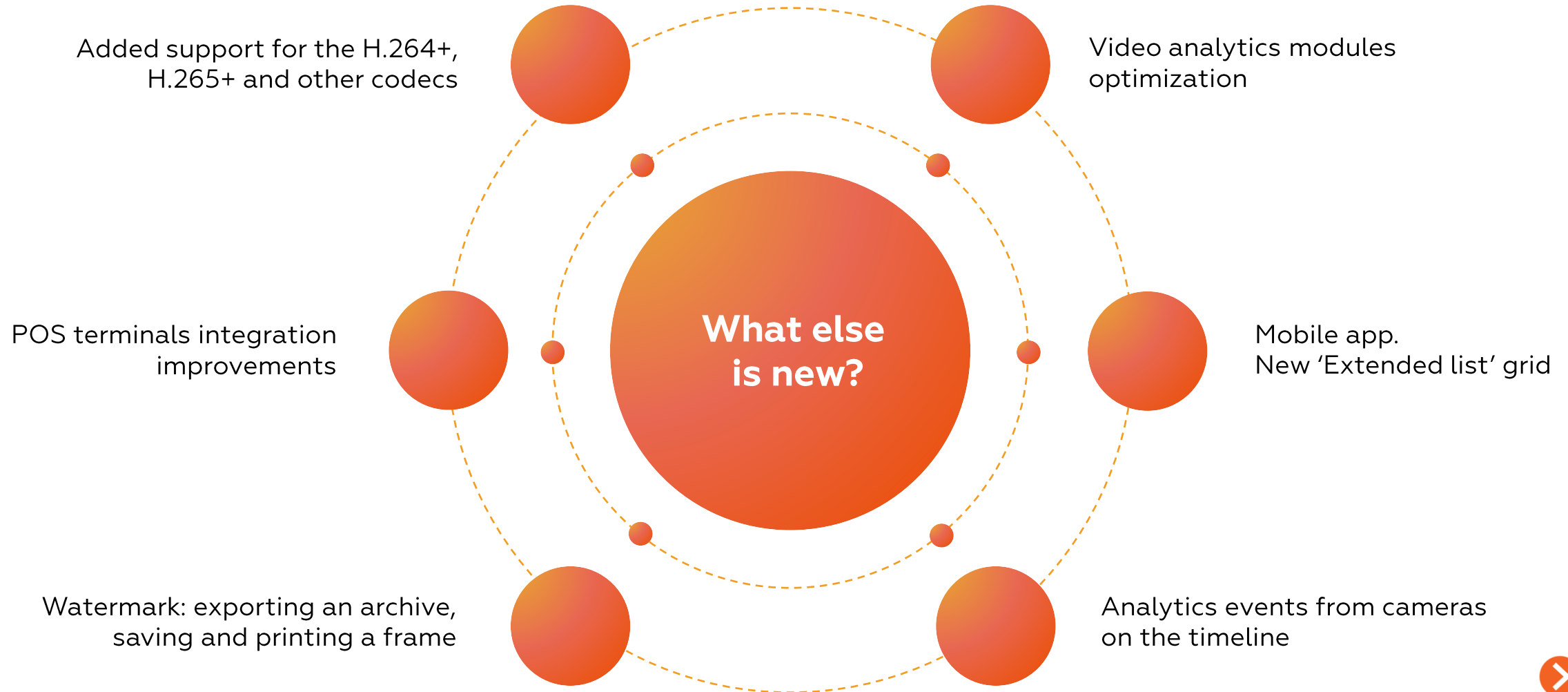
Use Emergency Vehicles
Detection to customize
automation



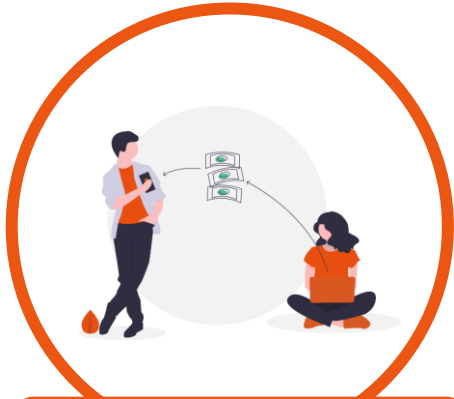
The barrier will open automatically
when a special vehicle is detected
in the alarm zone



WHAT ELSE IS NEW?



WE ARE IN TOUCH:



Partner relations
managers

- Promo purchase
- Cooperation conditions
- Project estimate

sales@eocortex.com



Product managers

- Product feedback
- Comments regarding new features

ux@eocortex.com



Tech support

- In case you run into problems setting up Eocortex

support@eocortex.com